

# IMAGING & SCREENING SECURITY SYSTEM

## VP-XR1000D-BSJ8 DUAL-VIEW X-RAY BAGGAGE SCANNER



### FEATURES

Dual X-ray generator technology with dual view for efficient screening & security

Dual display monitors with 7 Colors image displaying technology for advance material classification

Dual energy penetration system supports organic/inorganic discerning

Versatile software with more than 30 image processing functions including auto-inspection of drugs and explosives

Supports real-time storage and retrieval of scanned images

Enhanced imaging software with density alerts and threat material prompts to assist operator

System initiates auto-diagnostic and calibration automatically at power on

Suitable for scanning mid-sized baggage at airports, bus/train/metro stations, borders/immigration security check points

## TECHNICAL SPECIFICATIONS

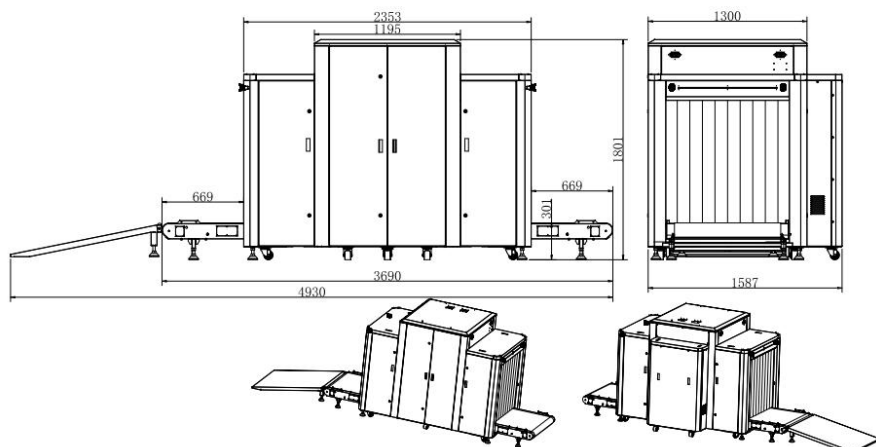
### VP-XR1000D-BSJ8

X-Ray Generator	Tunnel Size	1010(W)x 1003(H)mm
	Wire Resolution	40 AWG
	Spatial Resolution	1.0 mm Horizontal, 1.0 mm Vertical
	Steel Penetration	Typical 36mm
	X-Ray Direction	Downward, Sideward
	X- Ray Generator	160kV*2
	X-Ray Leakage	≤ 0.1 mR/hr(1.0 μSv/hr)
	S/N Ratio	<45dB
	Conveyor Speed	0.23m/s Forward
	Conveyor Height	301mm
	Conveyor Max Load	250kg
	Leakage Current	1.2mA
	Cooling	Sealed oil bath with forced air
	Duty Cycle	100%,no warm-up procedure required
	Film Safety	Guarantee ISO 1600 (33 DIN)
	Storage Capacity	Up to 500,000 images stored automatically, with support for USB transfer for backup or data export
Image Processing System	Operation System	Windows®OS (standard)
	Display	Dual 2x24"LED display with Anti-glare, resolution: 1980 x 1080
	Operation Console	Available /optional
	Storage	1TB SSD (standard)
	Keyboard	Keyboard included
	Roller Table	Integrated with tunnel
	X-Ray Sensor	L-shaped photodiode array detector (dual energy),24bit depth
	Color Image Display	24 bit color display
	Edge Enhancement	Supports clear outlining of the object edges
	Image Recall	Supports 30 images recallable
Power & Environmental	Working Temperature	0 °C ~ 40°C
	Storage Temperature	-20°C-60°C
	Humidity	5%-95% non-condensing
	Working Voltage	AC220V(±10%) 50/60Hz, 10A Max
	Automatic Voltage Regulator	Supported
	Power Consumption	Max. 800W
Mechanical	Dimensions	4930(L)x1300(W)x1801(H)mm
	Net Weight	1020kg
Certifications	Certifications	CE, RoHS, FDA

\*Exact products and specifications shown may vary by geographic region and are subject to change without notice. Weights and measurements are approximate and may vary.

## DIMENSIONS

Unit: mm

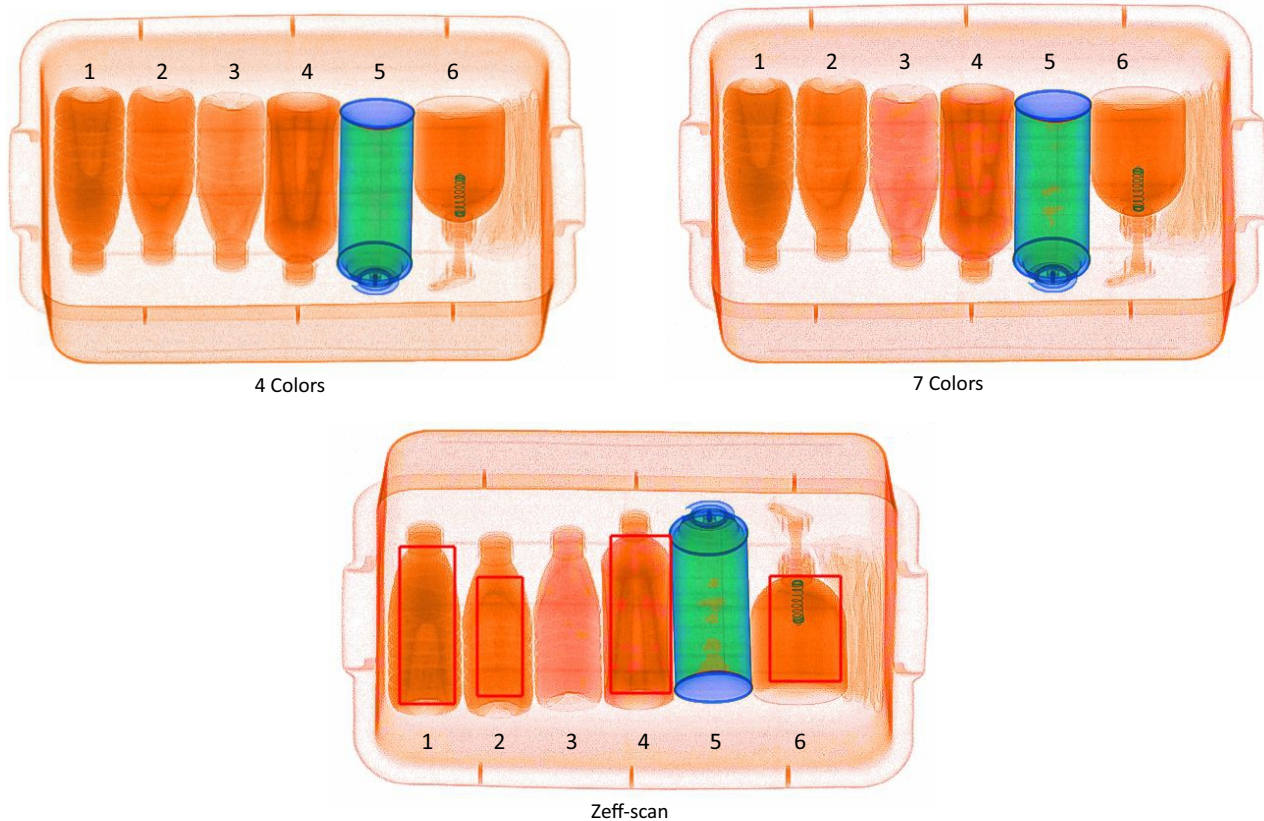


## Software Advantages:

### ■ COLOR/BLACK & WHITE DISPLAY IN FOLLOWING SENTENCE

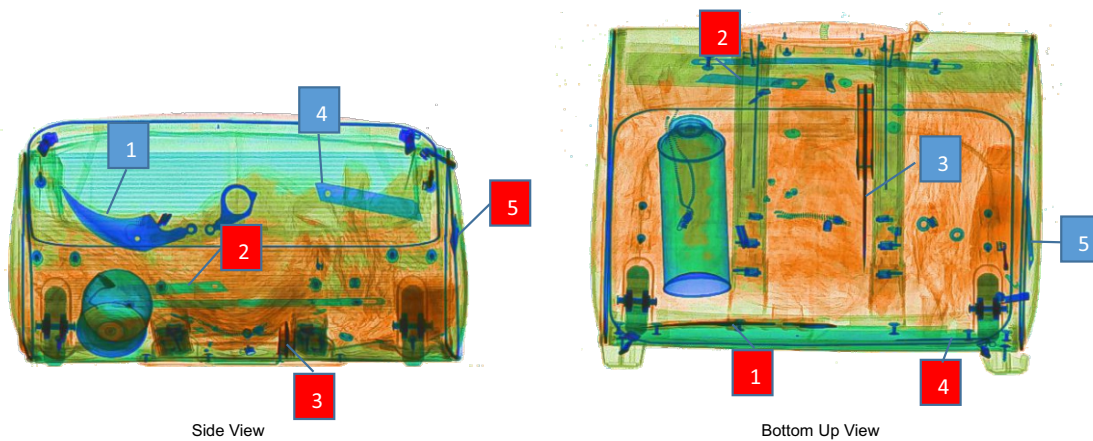
The innovative 7-color imaging dual-energy technology is an advance material classification system which enables operator to view screened objects in 7 colors, each color correlate to a specific range of atomic number. It colors the 3-Kerosene with RED, hence easier to detect threats.

\* 1-Water, 2-Alcohol, 3- Kerosene, 4-Edible Oil, 5-Liquefied Natural Gas, 6-Antibacterial Hand Gel



### ■ DUAL-VIEW TECHNOLOGY

It provides dual-view images from bottom up and sideward, improving the detection rate of the concealed dangerous and prohibited objects. Images from the two perspectives complement each other, the operator can see more threats in the side view that can't be seen in the bottom-up view.



Material Type	Atomic No.	Colors	Colors	Example	Possible Threat
Light Organics	6	Orange	Orange	Polyethylene light hydrocarbons	Natural gas, gasoline, kerosene
Organics	6-8	Orange	Orange	Timber, oil, alcohol, water	Explosives pure drugs, diamonds
Light Inorganics	8-10	Orange	Yellow	Paper, teflon	Drugs
Inorganics	10-12	Green	Green	Glass	Gems
Nonmetals and Light Metals	12-18	Green	Green	Aluminum,silicon	Gunpowder, detonators
Heavy Metals	18-30	Blue	Blue	Iron, steel, copper, brass,nickel,titanium	Weapons,ammunition knives
Dense Metals	30+	Blue	Violet	Zirconium,tin,bronze	Precious
Impenetrable	-	Black	Black	Lead,bismuth	Hidden threats

## ■ SOFTWARE ADVANTAGES:

The software is to control the X-RAY baggage scanner as well to acquire and process the X-RAY image with different tools to find the potential threat, all the tools can be controlled by Exclusive Control Panel.

### **IMAGING PROCESSING TOOLS**

- Switchable 4 and 7 Colors Mode
- Negative Display
- Gray
- Variable Gamma
- Organics & Inorganic & Mixture Striping
- Plus 6 kinds Pseudo Color Display
- Variable High & Low Penetration
- Log & Exp Trans
- Gaussian Blur& Sharpen
- Super &Partial Enhancement
- High & Low & Fusion Energy
- Density Threshold Alarm(DTA)
- Continuous Zoom(64X)
- Splicing-scan(S-scan)
- Continuous Scan(C-scan)
- Z<sub>eff</sub>-scan(Z-scan)
- AI Roller(optional)
- Reset Image
- Calibration

### **AUXILIARY FUNCTIONS**

- Advanced AI engine: Detects and identifies over 150 threat items with high precision (optional)
- Bidirectional Scanning
- Recall Historical Image
- Query & Backup & Mark Image
- Print Image
- Baggage Counter
- Day/Time Display
- Multi-language Operation
- Auto Image Archiving
- Storage Type:PNG, JPEG, BMP
- Real-time Image Manipulation
- Different Access Level Account
- Network Ready
- Secure Access Key
- Emergence Stop Button
- 0.5 m Roller Table
- Interlock(optional)
- Threat Image Projection(TIP)(optional)
- Operator Training System (OTS)(optional)



## Integrated Cameras :

Integrated Entry/Exit surveillance monitoring cameras (optional)



### VANTAGE INTEGRATED SECURITY SOLUTIONS LIMITED

B3, Bredon House 321, Tenttenhall Road Tettenhall, Wolverhampton

West Midlands, WV6 0JZ United Kingdom

Ph: +44-1902-793383, Email: [sales@vantagesecurity.com](mailto:sales@vantagesecurity.com)

[www.vantagesecurity.com](http://www.vantagesecurity.com)

(AN ISO 9001 : 2008, ISO 14001 : 2004 CERTIFIED COMPANY)

