

ENTRANCE MANAGEMENT SYSTEMS

VP-VM3600DUV-D10 DUAL SCAN 3D UNDER VEHICLE SCANNING SYSTEM



FEATURES

Dual area scan sensors generate high resolution 3D image with low distortion

4K full HD color image output up to 6,000 x 4096 pixels

Real time image display of chassis / under-carriage in the management system

Supports vehicles with different height of chassis, no limitation for vehicle length

Embedded bi-directional triggers, support bi-directional scan

Supports up to 60km/h vehicle speed

IP68 rated weather proof scanning flush-mount UVSS unit

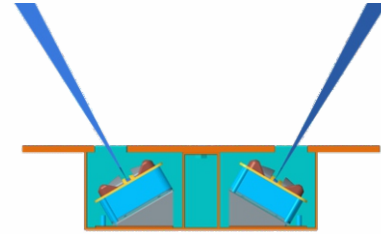
Management software package for UVSS

Simultaneous monitoring & recording of images of multiple areas with upto 4 additional IPC channels

Seamless integration with ANPR and driver face capture camera

Dual-View Under Vehicle Scanning

- High-resolution area-scan technology for distortion-free imaging with real-time display.
- Dual tilted scanners ensure visibility above bumpers, beams, fuel tanks, and exhaust systems.
- Enclosure material 304 grade stainless steel supports up to 60-ton load bearing capacity.

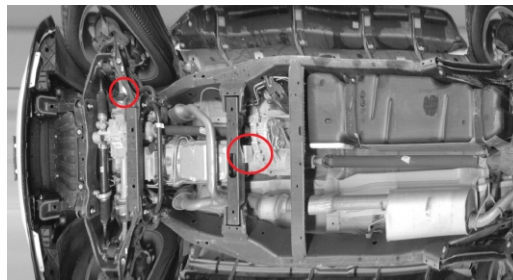


LPR Camera

- Simultaneous capture of front and rear plates.
- Alerts if plate numbers do not match
- Alerts for missing number plate.
- 2.8–12 mm (5-50mm optional) varifocal lens IK10 vandal-resistant cameras.

Foreign Object Detection (FOD)

- Baseline image comparison.
- Detection time: 3–4 seconds.
- Foreign objects highlighted with red circle



Face Recognition – Driver & Passenger Capture Camera

- High-performance day & night face capture system.
- Captures clear face images of driver and passenger even through tinted glass, and light glare
- Supports vehicle speeds from 0 km/h to 35 km/h without affecting image clarity.
- Automatic AI-based facial detection and high-resolution face cropping.
- Supports Face Blacklist / Whitelist alerts.



TECHNICAL SPECIFICATIONS

VP-VM3600DUV-D10

Under Vehicle Scanner	Area Scan Speed	Forward: 0 – 60 km/h, Backward: 0 – 60 km/h
	Height Limit	50 – 2000 mm
	Width Limit	<4500 mm
	Length Limit	No limit
	View Angle	> 180°
	Tilt Angle	Dual angles 60° front 60° rear
	Resolution	> 6000 x 4096 pixels
	Illumination	LED 24,000 lumens
	Capture Rate & Throughput	> 99.9% with throughput of ≥ 240cars/hr /≥1 40 heavy vehicles/hr
	Imaging Time	Real time
	Intelligent Alarm	Alerts for foreign objects detected in the scan image of under carriage, chassis (supported optional), automatic foreign object highlighting, automatic highlighting of changes
	Auto Exposure	Supported
	UVSS Enclosure	304 stainless steel
	Load Bearing	Up to 60 tons (vehicle weight)
	Above Ground	8mm
	Protection Level	IP68
	Working Temperature	-40°C - 70°C
	Dimension	1340mm x 480mm x 118mm
	Weight	67KG
Server	CPU	Core i5
	Memory	Minimum 8GB
	Hard Disk	128G SSD + 1T HDD
	Monitor	27 inch, IPS
	Ethernet	1 port 10/100/1000M RJ45
	USB Port	USB 2.0 x 2
	Power Supply	AC 100V ~ 240V
	Working Temperature	-10°C - 50°C
	Dimension	1150mm x 720mm x 500mm
	Weight	39 KG
Controller	Vehicle Detector (Input)	2 channels
	Detector Sensitivity	4 level
	POE	6 ports 10/100/1000M RJ45
	POE Standard	IEEE802.3af/at
	External Trigger	2 channel
	Scanner Connector	1 set
	Communication	1 port Ethernet 10/100/1000M RJ45
	Power Supply	AC 100V ~ 240V
	Working Temperature	-10°C - 50°C
	Dimension	500mm x 300mm x 850mm
	Weight	21 KG
License Plate Recognition Camera	Sensor	1/2.8" CMOS
	Resolution	2592 (H) x 1944 (V)
	Minimum Illumination	0.01 Lux (white light)
	Standard Lens	2.8-12 mm varifocal Lens (optional 5-50mm)
	Detection Range	3-10meters

TECHNICAL SPECIFICATIONS

VP-VM3600DUV-D10

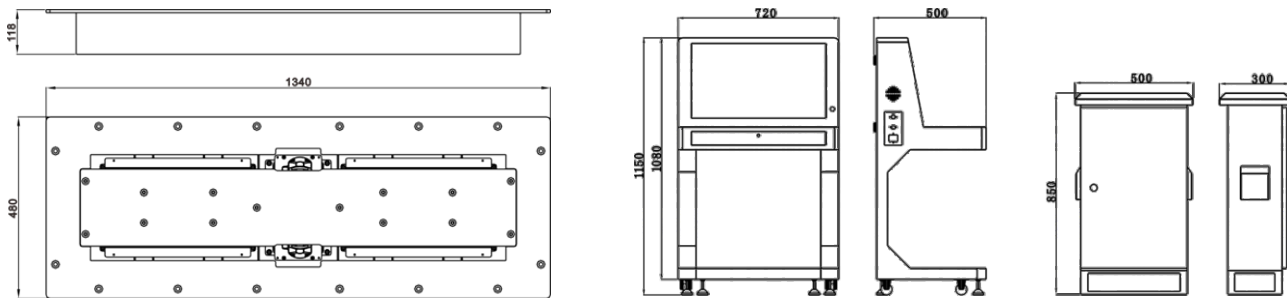
License Plate Recognition Camera	Lens Interface	CS / M14
	Noise Reduction	2D / 3D noise reduction supported
	Wide Dynamic Range	Supported
	Network Interface	1 x RJ45 port, 10/100 Mbps adaptive
	Video Compression Standard	H.264/H.265/MJPEG;
	Day & Night	True Day & Night with ICR
	Protocols	SDK, ONVIF, HTTP, RTSP, TCP/IP, UDP, RS485, IO, NTP
	Capture rate & Recognition rate	≥99.9%(typical scene + typical license plate)
	Adapt to Vehicle Speed	0-50 km / h
	Smart Analytics	Supports English and Arabic number plates, blacklisting, whitelisting, alert for vehicles with no license plate or special license plate, Mainstream Vehicle logo and color recognition, halted vehicle alarm
	Audio	1 input + 1 output
	TF Card Slot	Supports up to 128 GB
	Power Supply	12V DC
	Power Consumption	Mainboard ≤ 5W
	Operating Temperature	-20°C ~ +70°C
	Protection Level	IP66 with sunshield, IK10
Driver Face Capture Camera	Sensor	1/2.8" CMOS
	Maximum Resolution	1920 x 1080
	Scanning Method	Progressive scanning
	Electronic Shutter	1/3s ~ 1/100,000s (adjustable manually or automatically)
	Minimum Illumination	Color mode: 0.002 Lux, B&Wmode: 0.0002 Lux, 0 Lux (with fill light on)
	Signal-to-Noise Ratio	>56 dB
	Maximum Distance	Infrared: 60 m Warm light: 30 m, Warm light for face detection: 5 m
	Focal Length	2.7 ~ 13.5 mm Motorized Lens
	Aperture	F1.6
	Facial Detection	Support facial detection, tracking, selection, capture, and reporting Optimal facial capture images Facial enhancement and exposure adjustment
	Compression Standards	H.265, H.264, H.264H, H.264B, MJPEG (auxiliary streams only)
	Wide Dynamic Range	120 dB
	Storage	External Micro SD card 512GB Supported
	Ethernet	1 x RJ-45 Ethernet port (10M/100M)
	Audio/Alarm Interface	Supported
	System Compatibility	Supports ONVIF standards, enabling smooth interoperability with third-party software platforms
	Working Voltage	DC12V (±30%) or POE+ (802.3at)
	Power Consumption	Maximum 15.7W
	Working Temperature	-30°C ~ +60°C
	Working Humidity	≤95%
	Storage Temperature	-40°C ~ +60°C
	Protection Level	IP67

*Exact products and specifications shown may vary by geographic region and are subject to change without notice. Weights and measurements are approximate and may vary.

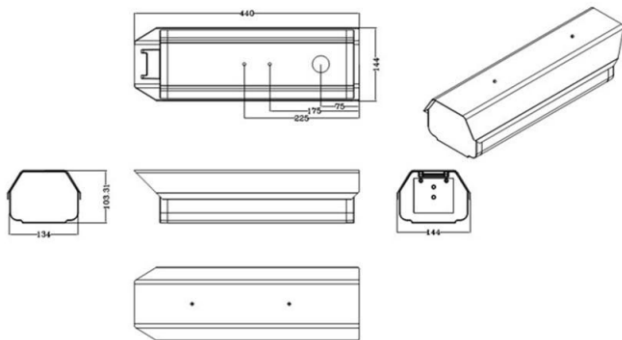
TECHNICAL SPECIFICATIONS

VP-VM3600DUV-D10

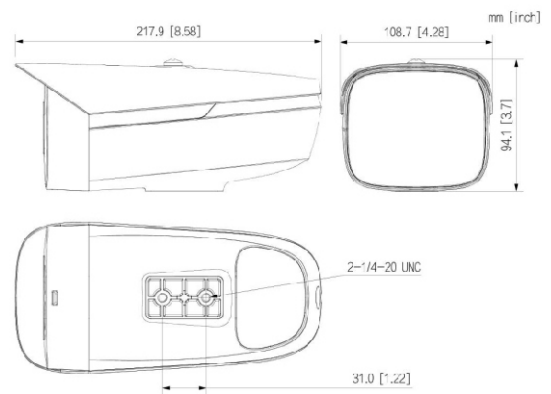
DIMENSIONS (mm):



LPR CAMERA:



FACE CAPTURE CAMERA:



Component model numbers:

Component(s)	Model(s)
Under Vehicle Scanner	VP-VM3600DUV-D10
Face Recognition Camera	VP-FR900UV-D10
License Plate Recognition Camera	VP-LPR720UV-D10

VANTAGE INTEGRATED SECURITY SOLUTIONS LIMITED.

B3, Bredon House 321, Tenttenhall Road Tettenhall, Wolverhampton

West Midlands, WV6 0JZ United Kingdom

Ph: +44-1902-793383, Email: sales@vantagesecurity.com

www.vantagesecurity.com

(AN ISO 9001 : 2008, ISO 14001 : 2004 CERTIFIED COMPANY)

