

# THERMAL IMAGING CAMERA

## VP-NC8884P-Z88THZ10I1 BI-SPECTRUM LONG RANGE PTZ CAMERA



### FEATURES

Dual imaging modes supported with integrated thermal and regular visual cameras

Uncooled FPA detector (VOx) thermal image sensor with 35-350mm continuous zoom lens

640×512 VGA thermal resolution for clearer imaging of distant objects

1/1.8" progressive scan CMOS sensor with 88X motorized zoom lens

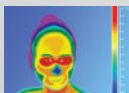
Full HD visual camera with high resolution 2688×1520 (4MP) imaging

Integrated  $\pm 0.01^\circ$  high-precision Pan tilt, 120°/s high rotation speed, support a variety of scanning modes and target tracking

Built-in intelligent alarm function based on system anomalies and video content analytics – intrusion & line cross detection

Waterproof IP67 rated enclosure with wind resistant design

Anti-corrosion coated for marine or coastal region application



**Thermal  
Imaging**



**1/1.8"  
Progressive  
Scan CMOS Sensor**



**WDR**



**IP67  
Weather Proof**

## TECHNICAL SPECIFICATIONS

### VP-NC8884P-Z88THZ10I1

Thermal Camera Parameter	Image sensor	Vox uncooled FPA detector
	Pixels	640x512
	Pixel Pitch	12 μm
	Spectral Range	8 ~ 14 um
	Thermal Sensitivity NETD	≤40mK
	Focal Length	35~350mm, 10x optical zoom
	Focus Mode	Auto/Manual/One time auto focus
	FOV	12.5°x10.0°~1.3°x1.0°
	Aperture	F0.92~F1.5
	Spatial Resolution	0.343~0.034mrad
	Color Palettes	20 modes selectable such as Blackhot / Whitehot / Rainbow,etc.
	Defocus correction	Support to ensure image keep clear over the operating temperature range
	Digital Zoom	8x
	Image Stabilization (EIS)	Supported
	ISP	Supports non-uniformity correction/brightness/contrast/digital filtering noise reduction/digital detail enhancement
Visual Camera	Image Sensor	1/1.8" Progressive scan CMOS sensor
	Effective Resolution	2688 (H)x1520 (V)
	Focal Length	11.3~1000mm
	Focus Mode	Auto/Manual/One time auto focus
	FOV	37.9°x21.9° ~ 0.4°x0.2°
	WDR	Supported
	Day /Night	Manual/Auto
	Wiper	Supported
	Heater/Cooling	Supports heater, automatically starts at less than 5°C open (can be manually controlled)/supports fan cooling
	Digital Zoom	4x
	Image Stabilization (EIS)	Supported
	Defog	Optical Defog
PTZ	Pan Range	360° continuous rotating
	Pan Speed	0.01° ~ 120°/s
	Tilt Range	-90° ~ +90°
	Tilt Speed	0.01° ~ 60°/s
	Preset	1024
	Long Focus Speed Limit	Supports automatic adjustment of the Pan-tilt speed according to the current focal length
	Scanning Mode	Preset/Pattern Scan/Patrol Scan/Linear Scan/Panorama Scan
	Preset Accuracy	±0.01°
	Adjustable Pan-Tilt	Supported
Network	Protocols	TCP/IP,UDP,ICMP,HTTP,HTTPS,FTP,DHCP,DNS,RTP,RTSP,RTCP, IGMP,SMTP, NTP, QoS
	System Compatibility	ONVIF/SDK/API/Serial port communication
	OSD	Supports time, axis, zoom, channel info, location info OSD
	Simultaneous live view	Up to 20 channels
	User Management	Up to 20 users, 2 levels: Administrator and User
	Web Browser	IE8+/Chrome/Firefox

## TECHNICAL SPECIFICATIONS

### VP-NC8884P-Z88THZ10I1

Video	Max.Resolution	2688×1520 (Visual) &1280×1024 (Thermal)
	Image Format	JPEG
	Audio Compression	G.711A/G.711Mu/PCM/AAC/MPEG2-Layer2
	Video Compression	H.264/H.265/MJPEG
Frame Rate	Main Stream	Visual: 50Hz:25fps(2688×1520,1920×1080,1280×720) 60Hz:30fps(2688×1520,1920×1080,1280×720) Thermal: 50Hz:25fps(1280×1024,1280×720,1024×768)
	Sub Stream	Visual: 50Hz:25fps(1920×1080,1280×720,704×576,352×288) 60Hz:30fps(1920×1080,1280×720,704×480,352×240) Thermal: 50Hz:25fps(640×512,384×288)
Smart Function	Fire Detection	Supported
	Strong Light Protection	Supported, prevents high temperature burns to the detector
	Coaxial Linkage Amplification	Supported
	Abnormal Alarm	Supports alarm trigger of network disconnection, IP address conflict, full memory, memory error, illegal access and abnormal detection
	VCA	Supports smart video analysis such as intrusion detection , line crossing detection and region intrusion detection
	Alarm Linkage	Recording/capture/sending mail/PTZ linkage/alarm output
Interface	Ethernet	Rj45 self-adaptive 10M/100M ethernet port
	Audio Interface	1channel input, 1 channel output
	Alarm Interface	7-channel input,2-channel output
	Storage Interface	Supports Micro SD card (Max.256G)
	Communication Interface	1-ch RS485, support Pelco-D
General	Power Supply	DC 48V±15%
	Power Consumption	Max.160W
	Operating Temperature	-40°C to + 70°C
	Operating Humidity	<90% RH or less (non-condensing)
	Ingress Protection	IP67
	Dimensions	620mm×854mm×525mm(W×H×L)
	Weight	80kg
Certificates	Certificate	CE, RoHS

\*Exact products and specifications shown may vary by geographic region and are subject to change without notice. Weights and measurements are approximate and may vary.

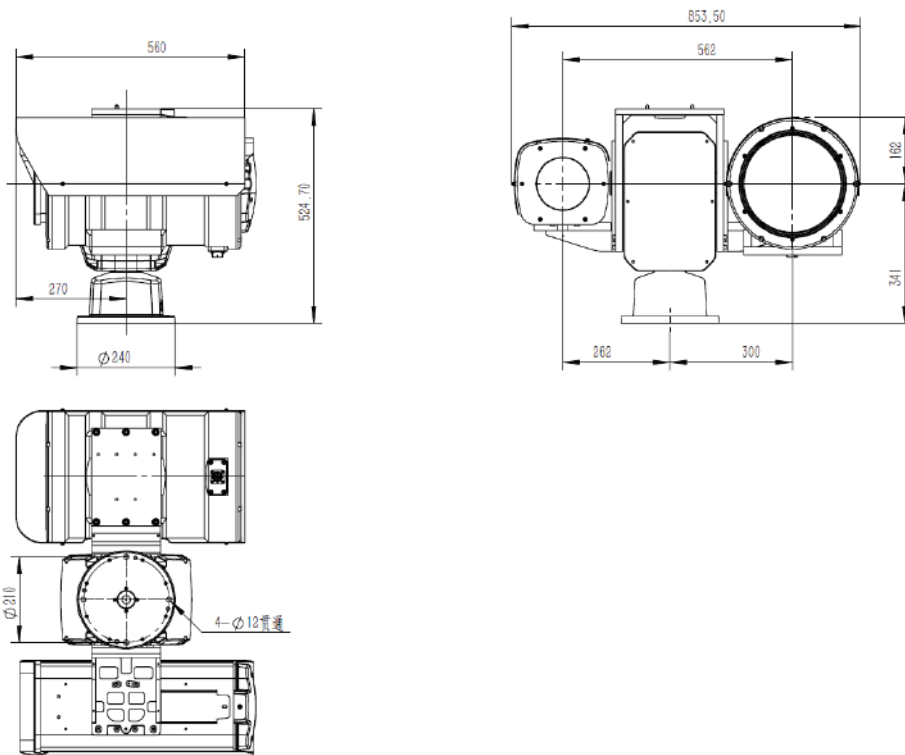
**The recommended distance of detecting, recognition and identification for human (1.8×0.5m) and vehicles (1.4×4.0m) are as follows:**  
**DD stands for Detecting Distance; RD stands for Recognition Distance; ID stands for identification Distance.**

Lens	DD (Vehicle)	DD (Human)	RD (Vehicle)	RD (Human)	ID (Vehicle)	ID (Human)
350mm	44.7km	14.6km	11.2km	3.6km	5.6km	1.8km

## TECHNICAL SPECIFICATIONS

VP-NC8884P-Z88THZ10I1

### DIMENSIONS:



## VANTAGE INTEGRATED SECURITY SOLUTIONS LIMITED

B3, Bredon House 321, Tenttenhall Road Tettenhall, Wolverhampton

West Midlands, WV6 0JZ United Kingdom

Ph: +44-1902793383, Email: [sales@vantagesecurity.com](mailto:sales@vantagesecurity.com)

[www.vantagesecurity.com](http://www.vantagesecurity.com)

(AN ISO 9001 : 2008, ISO14001 : 2004 CERTIFIED COMPANY)

