

# THERMAL IMAGING CAMERA

## VP-NC8864P-Z37F75THI1 Dual-spectrum PTZ Network Camera



### FEATURES

Dual imaging modes supported with integrated thermal and visual cameras

Uncooled FPA detector (VOx) thermal image sensor with 75mm fixed lens

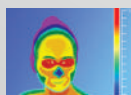
640×512 VGA thermal resolution for clearer imaging of distant objects

1/1.8" progressive scan CMOS sensor with 37X zoom lens

Full HD visual camera with high resolution 2688×1520 (4MP) imaging

Integrated Pan tilt 100°/s high rotation speed, support a variety of scanning modes and target tracking

Waterproof IP66 rated enclosure with wind resistant design



**Thermal  
Imaging**



**1/1.8"  
Progressive  
Scan CMOS Sensor**



**WDR**



**IP66  
Weather Proof**

# TECHNICAL SPECIFICATIONS

## VP-NC8864P-Z37F75TH1

Thermal Camera Parameter	Image sensor	Vox uncooled FPA detector
	Pixels	640×512
	Pixel Pitch	12 μm
	Spectral Range	8 ~ 14 um
	Thermal Sensitivity NETD	≤40mK
	Focal Length	75 mm, 37x optical zoom
	Focus Mode	Auto/Manual/One-shot Auto
	FOV	5.9°×4.7°
	Aperture	F1.0
	Spatial Resolution	0.160mrad
	Color Palettes	20 modes selectable such as Blackhot / Whitehot / Rainbow,etc.
Visual Camera	Image Sensor	1/1.8" Progressive scan 4 MP CMOS sensor
	Effective Resolution	2688 (H)×1520 (V)
	Focal Length	6.5~240mm
	Focus Mode	Auto / Manual /One-shot auto
	FOV	61.8°×37.2°~ 1.86°×1.05°
	WDR	Supported
	Day /Night	Manual/Auto
	Fog Penetration	Support optical fog penetration
PTZ	Pan Range	360° Continuous Rotate
	Pan Speed	0.1° ~ 100°/s
	Tilt Range	-90° ~ +40°
	Tilt Speed	0.1° ~ 60°/s
	Scan Mode	Preset/Pattern Scan/Patrol Scan/LinearScan/Panorama Scan
Network	Protocols	TCP/IP,UDP,ICMP,HTTP,HTTPS,FTP,DHCP,DNS,RTP,RTSP,RTCP, IGMP,SMTP, NTP, QoS
	System Compatibility	ONVIF/SDK
	Simultaneous live view	Up to 20 channels
	User Management	Up to 20 users, 2 levels: Administrator and User
	Web Browser	IE8+, multiple languages
Video	Max.Resolution	2688×1520(Visible),1280×1024 (Thermal)
	Image Format	JPEG
	Audio Compression	G.711A/G.711Mu/PCM/AAC/MPEG2-Layer2
	Video Compression	H.264/H.265/MJPEG
Frame Rate	Main Stream	Visual: 50Hz:25fps(2688×1520,1920×1080,1280×720) 60Hz:30fps(2688×1520,1920×1080,1280×720) Thermal: 50Hz:25fps(1280×1024,1280×720,1024×768)
	Sub Stream	Visual: 50Hz:25fps(1920×1080,1280×720,704×576,352×288) 60Hz:30fps(1920×1080,1280×720,704×480,352×240) Thermal: 50Hz:25fps(640×512,384×288)

## TECHNICAL SPECIFICATIONS

### VP-NC8864P-Z37F75TH11

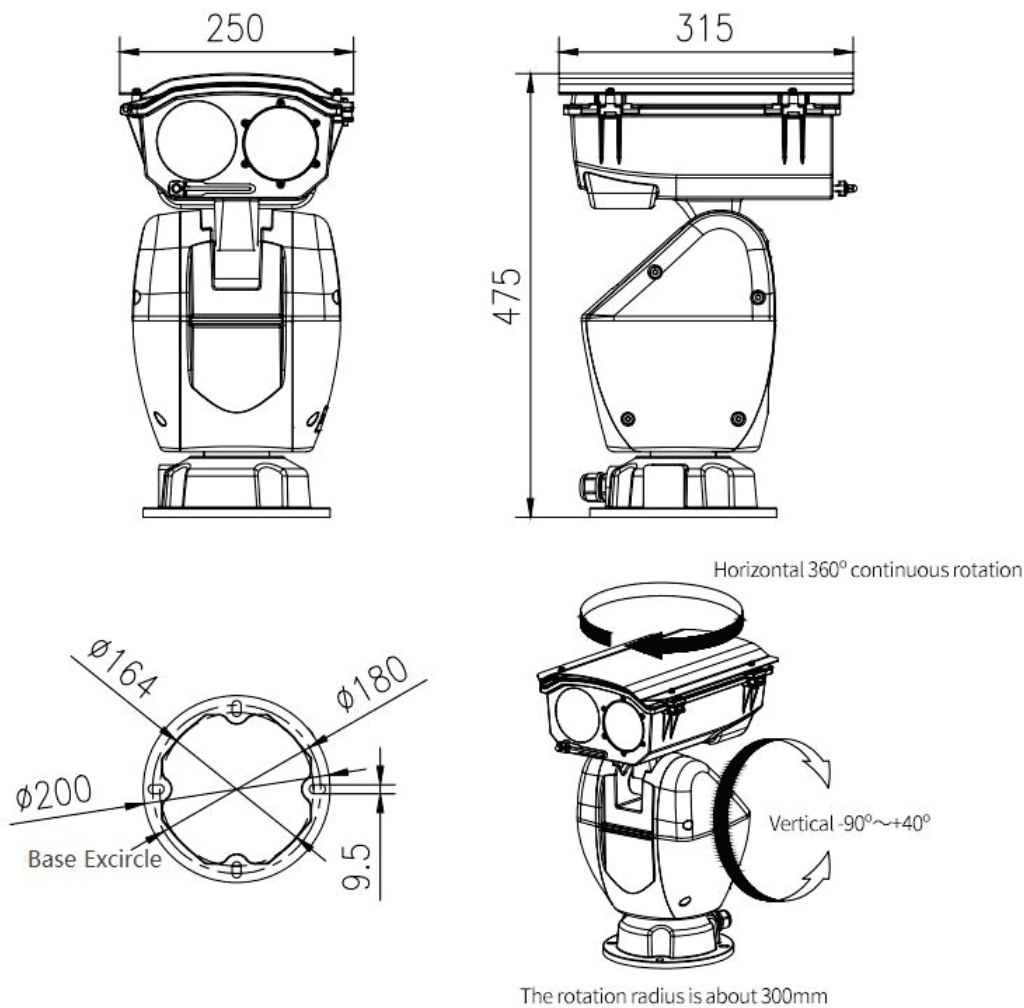
Smart Function	Fire Detection	Yes, supported
	Zoom Linkage	Yes, supported
	Smart Record	Alarm trigger recording, disconnection trigger recording (continue transmission after connection)
	Smart Alarm	Support alarm trigger of network disconnection, IP address conflict, full memory, memory error, illegal access and abnormal detection
	Smart Detection	Support smart video analysis such as line intrusion, cross-border, and region intrusion
	Alarm Linkage	Recording/Capture/Sending mail/PTZ linkage/Alarm output
Interface	Ethernet	RJ45 self-adaptive 10M/100M Ethernet port
	Audio Interface	1channel input, 1 channel output
	Alarm Interface	7-channel input, 2-channel output
	Storage Interface	Support Micro SD card (Max.256G)
	Communication Interface	1-channel RS485
Electrical	Power Supply	DC 24V±15%
	Power Consumption	Max.75W
General	Operating Temperature	-40°C to + 70°C
	Operating Humidity	<90% RH or less (non-condensing)
	Enclosure	IP66,TVS 6000V Lightning Protection, Surge Protection and Voltage Transient Protection
	Dimensions (mm)	250mm×472mm×360mm(W×H×L)
	Weight	14kg
Certificates	Certificate	CE,FCC,RoHS

\*Exact products and specifications shown may vary by geographic region and are subject to change without notice. Weights and measurements are approximate and may vary.

**The recommended distance of detecting, recognition and identification for human (1.8×0.5m) and vehicles (1.4×4.0m) are as follows:**  
**DD stands for Detecting Distance; RD stands for Recognition Distance; ID stands for identification Distance.**

Lens	DD (Vehicle)	DD (Human)	RD (Vehicle)	RD (Human)	ID (Vehicle)	ID (Human)
75mm	9.6km	3.1km	2.4km	0.8km	1.2km	0.4km

DIMENSIONS:



VANTAGE INTEGRATED SECURITY SOLUTIONS LIMITED

B3, Bredon House 321, Tenttenhall Road Tettenhall, Wolverhampton

West Midlands, WV6 0JZ United Kingdom

Ph: +44-1902793383, Email: sales@vantagesecurity.com

[www.vantagesecurity.com](http://www.vantagesecurity.com)

(AN ISO 9001 : 2008, ISO14001 : 2004 CERTIFIED COMPANY)

