

PEOPLE ENTRANCE MANAGEMENT SYSTEM

V-PM3400SC/DC-FBT3 SINGLE /DOUBLE CORE MACHINE FLAP BARRIER GATE



FEATURES

- Heavy-duty motorized-automatic flap barrier
- Bi-directional operation supported
- Half-height design with passage width of 550mm, optional 900mm
- LED status indicator & adjustable time out delay
- Automatic reset of barrier gate after each passage
- Integration support with any RFID/Biometric Reader through NO input
- Fail safe & fail lock function supported in case of emergency
- Top quality AISI 304 grade SS construction with IP54 rating



LED Direction Indicators

INGRESS PROTECTION RATING

IP54



100% Duty Cycle



Delay Time



Wired Terminal

TECHNICAL SPECIFICATIONS

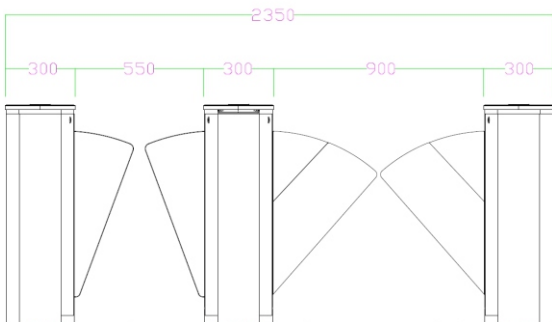
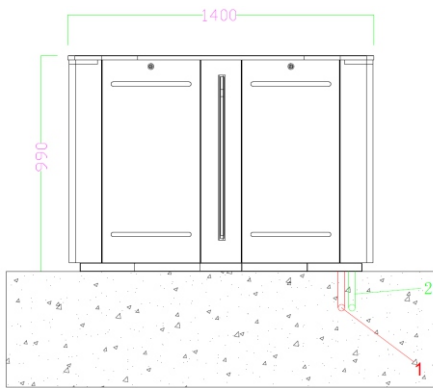
V-PM3400SC/DC-FBT3

Parameter	Specifications
Passage Width	550mm standard ,optional 900mm with telescopic acrylic flaps
Throughput rate	35-40 persons per minute
Safety Sensors	5 pairs of infrared sensors for smooth passage traffic and protection of pedestrian
Passage Direction	Unidirectional/ bidirectional
Drive	Electro-mechanical DC motor drive
Power/Mechanism Failure	Fail safe or fail lock status for either one or both directions be in free movement mode (standard) or locks in the home position
Fire Alarm Integration	Supported to provide free passage for evacuation
Motor Power	40W (DC brushless)
Service Life	>5 million operation cycles
Communication Interface	Relay Input (NO/NC/COMM) Optional RS232/RS485
Operating Voltage	DC 24V
Power Supply Voltage	AC100~240 V
Power Consumption	35W
Working Temperature	-25°C~+70°C
Relative Humidity	≤90% no condensation
IP Rating	IP54 , optional IP56
Chassis Material	AISI 304 grade stainless steel construction, optional AISI 316 grade stainless steel, with fully welded top cover suitable for outdoor use
Door Material	Acrylic
Dimension	1410x300x990mm
Net Weight	75kg single core, 95kg double core
Certifications	CE, FCC, ROHS

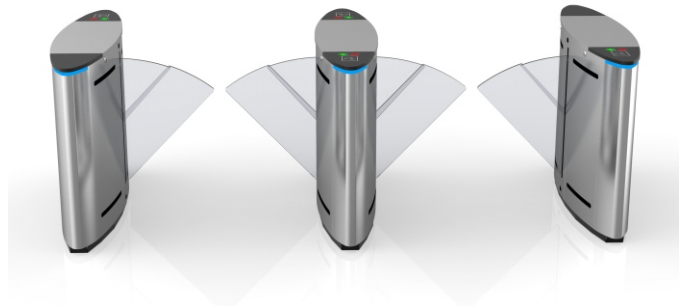
*Exact products and specifications shown may vary by geographic region and are subject to change without notice. Weights and measurements are approximate and may vary.

DIMENSION:

Unit: mm



REFERENCE IMAGE FOR 900MM PASSAGE WIDTH:



REFERENCE IMAGE FOR FULLY WELDED TOP COVER :



VANTAGE INTEGRATED SECURITY SOLUTIONS LIMITED.

B3, Bredon House 321, Tenttenhall Road Tettenhall, Wolverhampton

West Midlands, WV6 0JZ United Kingdom

Ph:+44-1902-793383, Email: sales@vantagesecurity.com

www.vantagesecurity.com

(AN ISO 9001 : 2008, ISO 14001 : 2004 CERTIFIED COMPANY)

