

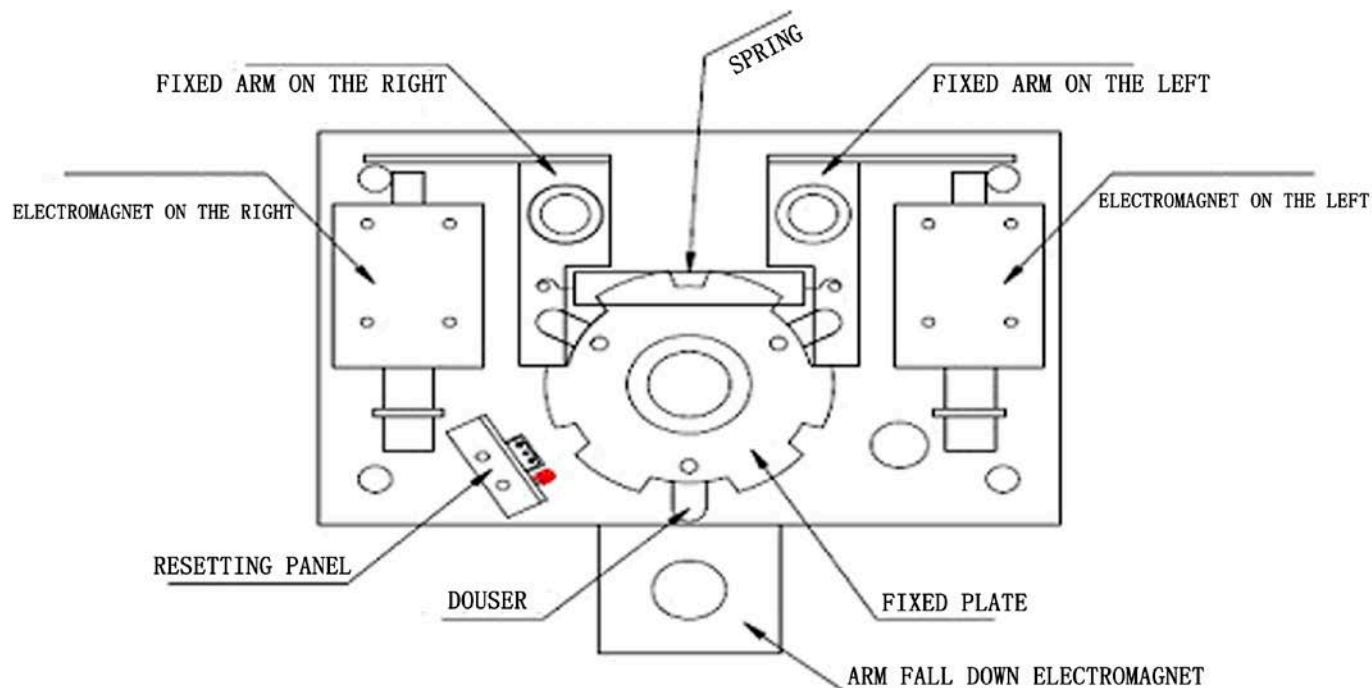


# TRIPOD TURNSTILE

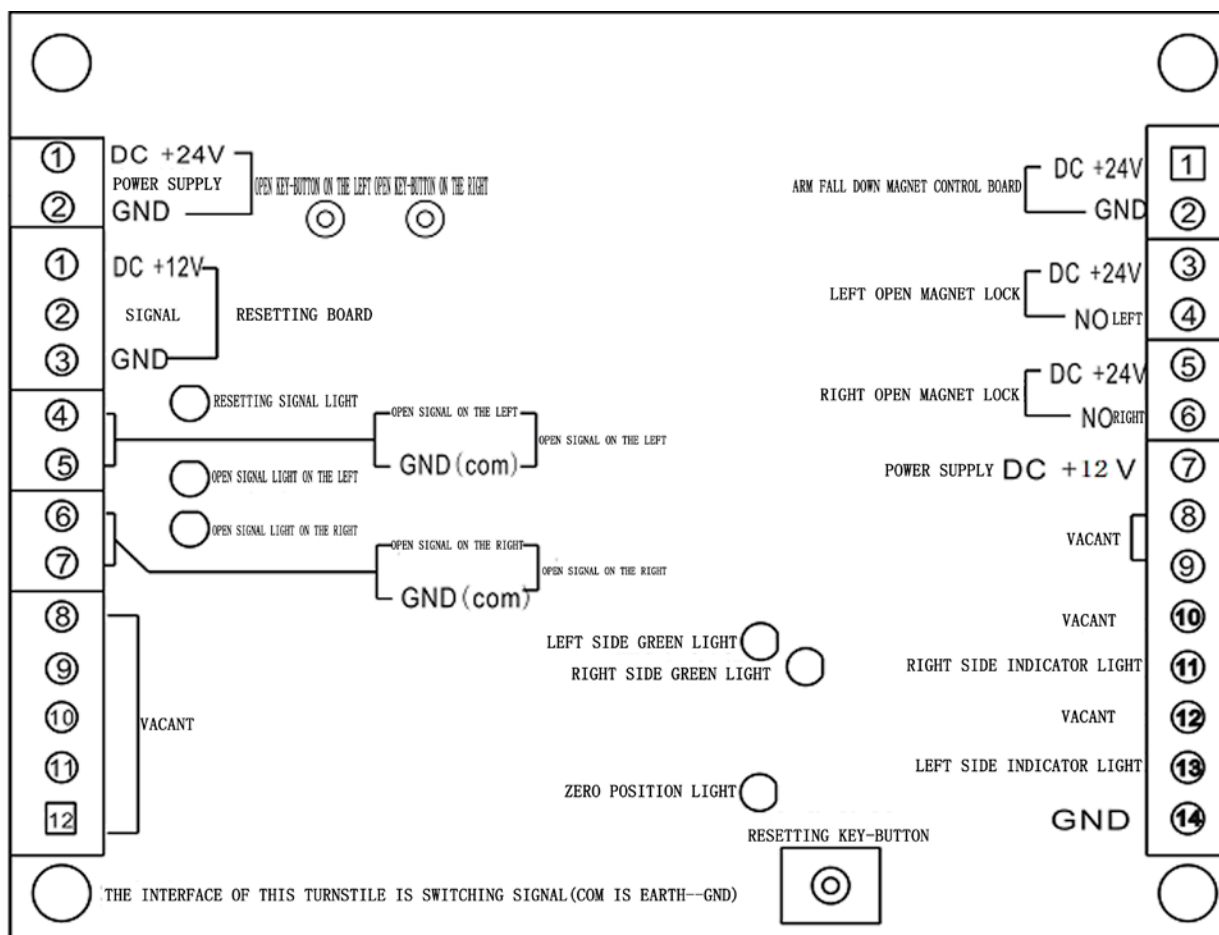
## User Manual

## Main Parts brief Diagram:

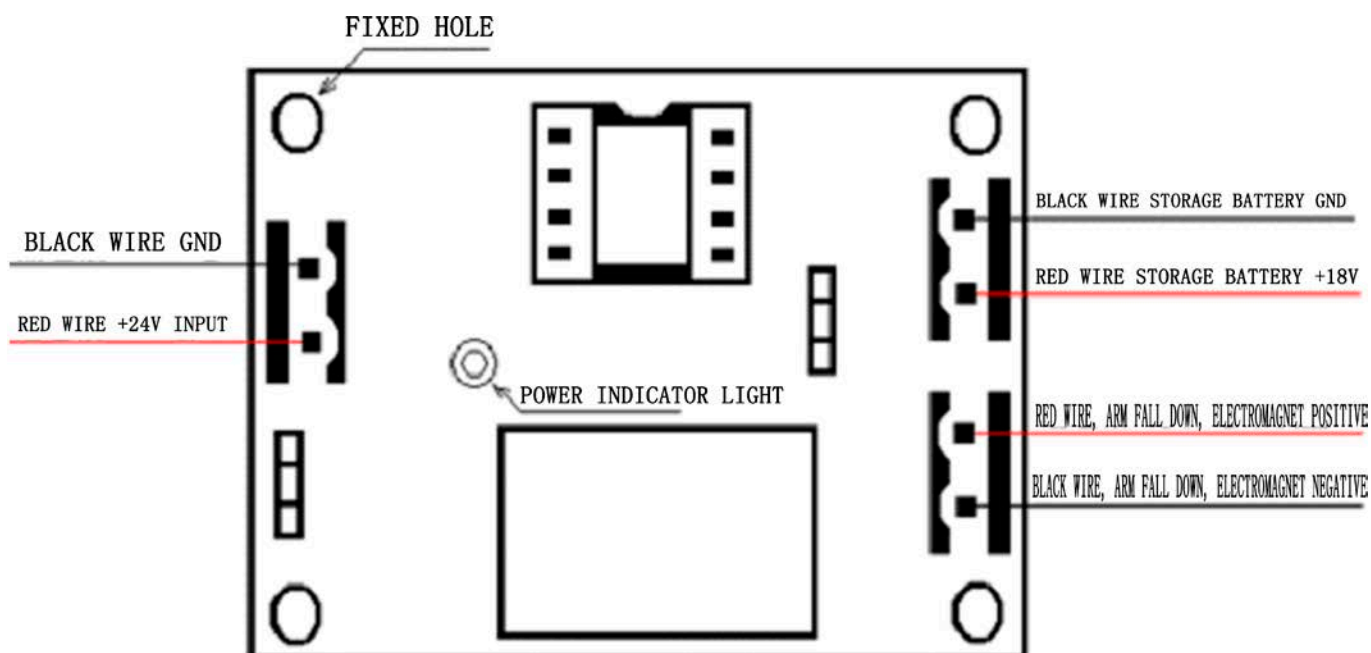
### 1、 Diagram 1 (Core):



### 2、 Diagram 2 (Main Control board and connection Diagram):

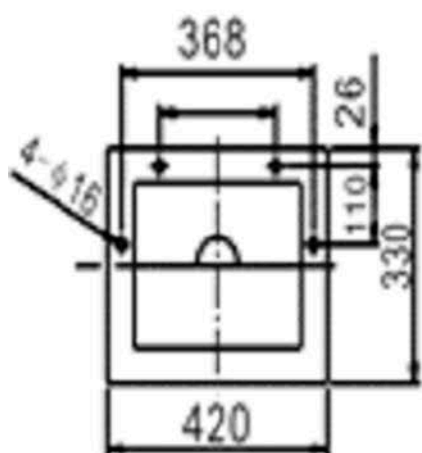


### 3、Diagram 3 (arm fall down electromagnet control board and connection diagram)

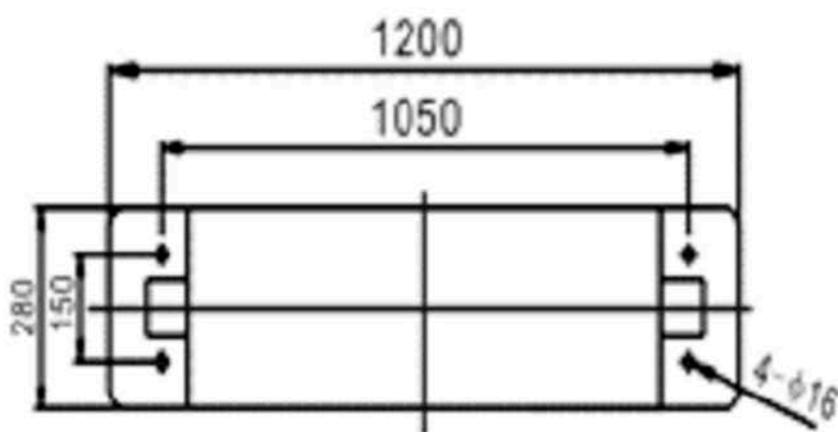


一、 Box installation size (Unit: mm): actual installation size is different from different modes; pls take real object as standard.

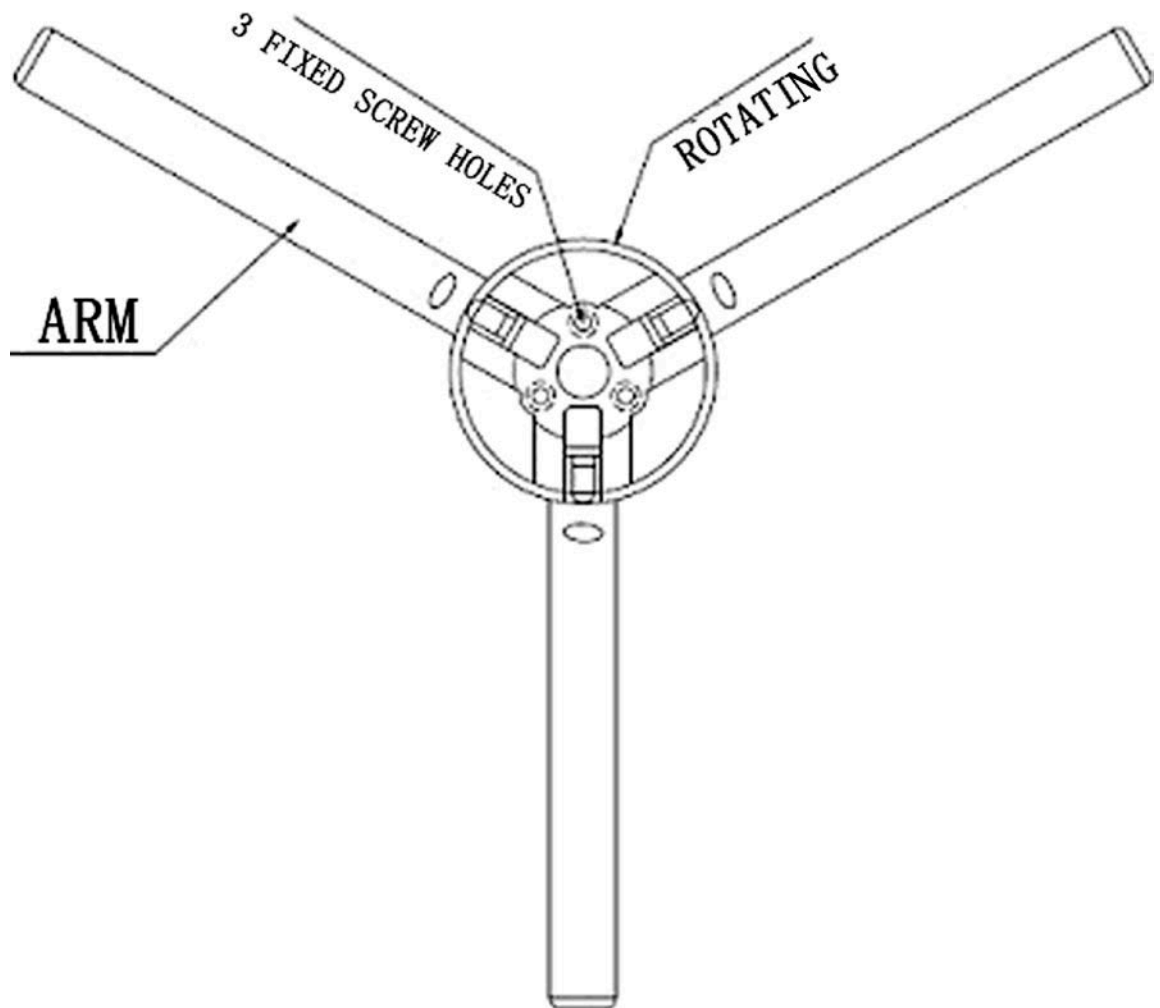
VERTICAL TYPE



BRIDGE TYPE



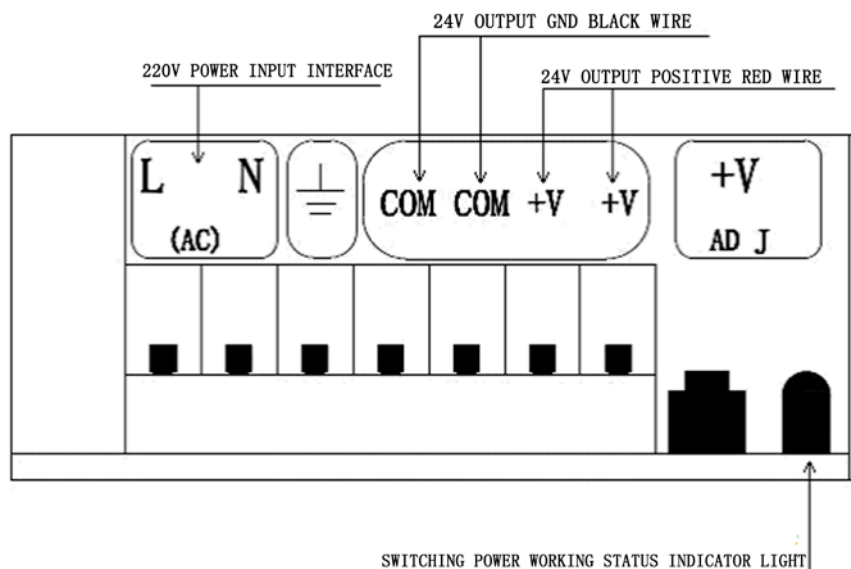
三、 Arm Installation Guide:



After installation, pls put the upper arm on the horizontal position, which means it is ready when you heard a clinking sound.

#### 四、 system function test:

- 1、 Pls use the wire to connect the switching power (AC) port separately, and the wire should at least 1.0mm, and make sure the connection is reliable.

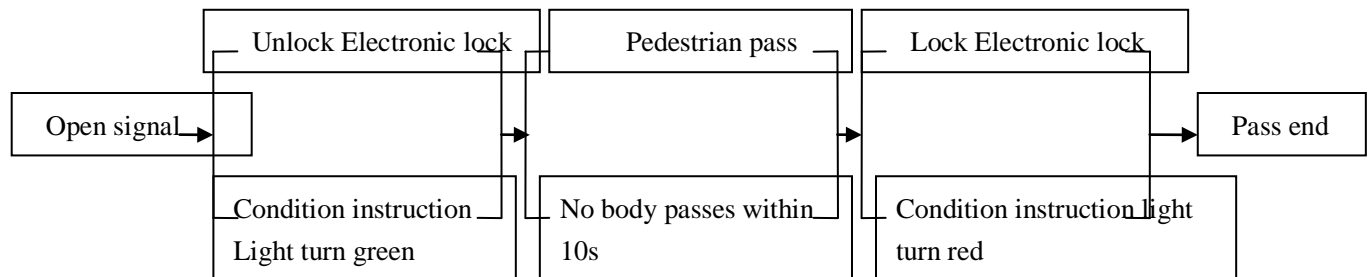


- 2、 Please plug the storage battery socket in the related port of “arm fall down control board”, then, the power indicator light will be on, at the same time, the electromagnet will work two times constantly, which means the control board (for arm fall down) works normally. At last, please connect the 220V power supply, the

light of control main board and direction guide board will be on.

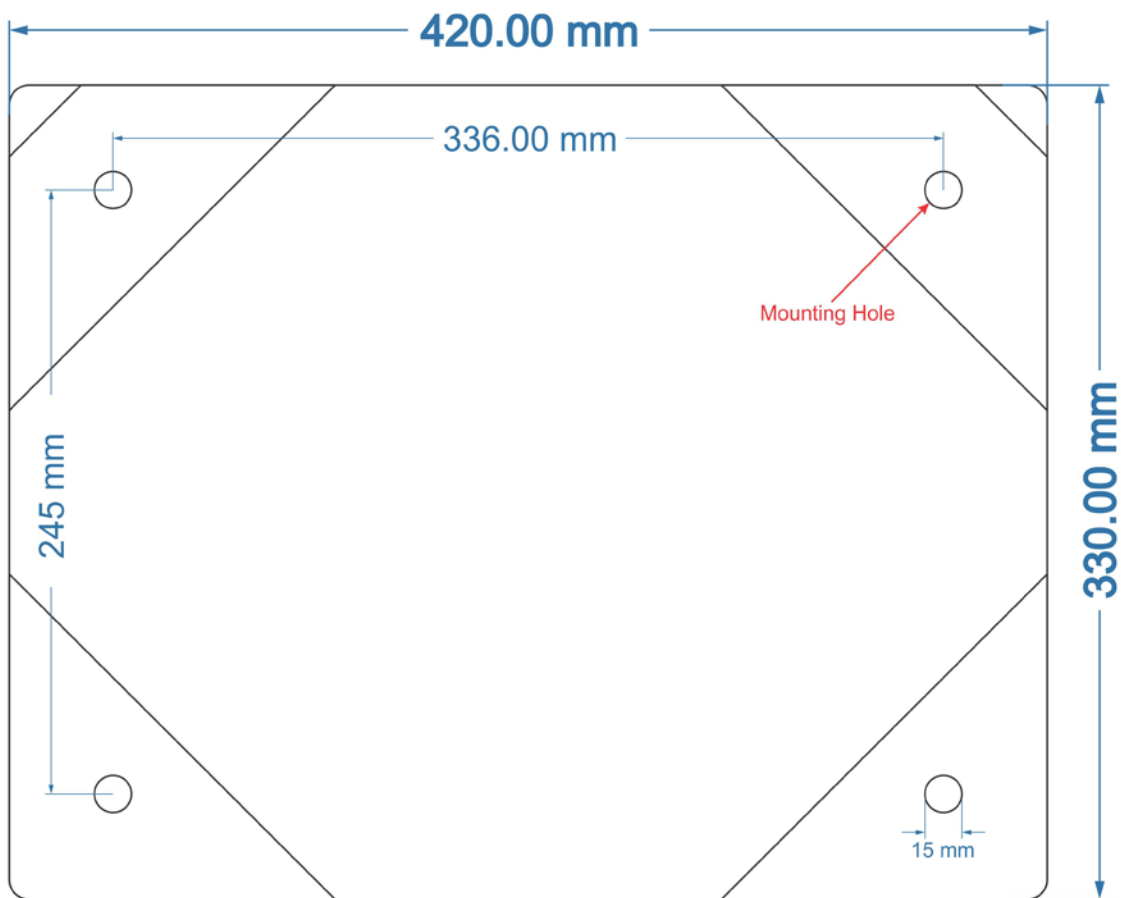
3、 Arm fall down when power off: cut the power off, electromagnet (for arm fall down) works one time, the arm fall down;

#### 4、 Turnstiles function test:

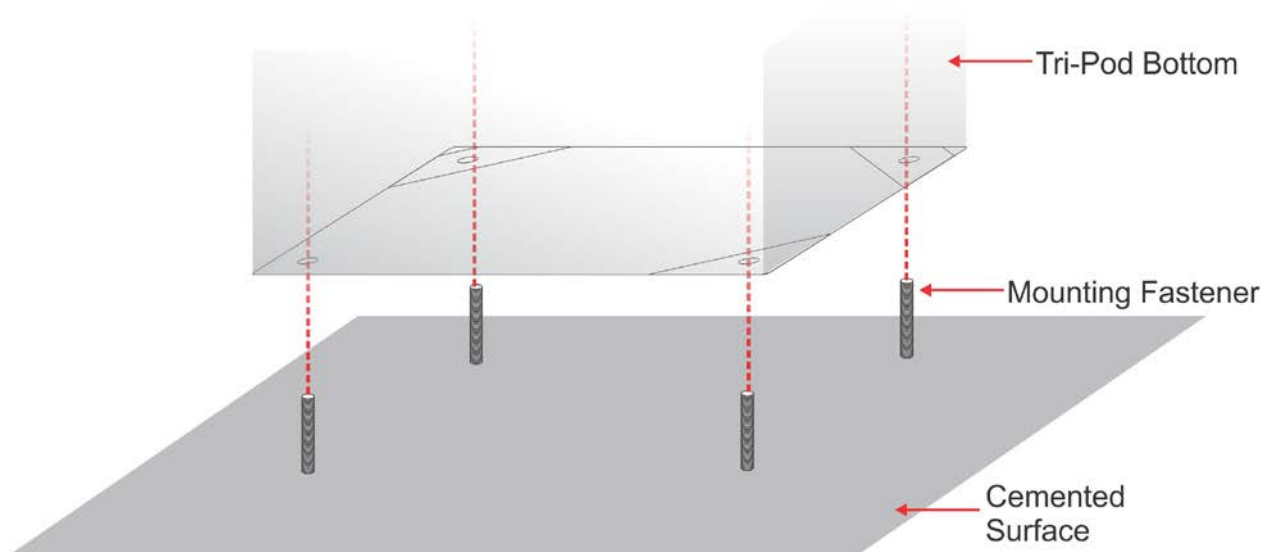


#### 5、 Notice:

- A、 Don't add any other equipments without permission, making sure the earth connection is safe and reliable;
- B、 For outdoor usage, the turnstiles should be installed on the cement installation platform, pls use something like sunshade for rainproof and moisture-proof, it is forbidden to use it outdoor without any protection.
- C、 There should be 50cm width between each two turnstiles back panel; if the turnstiles installation nears the wall or other thing, it also needs 50mm gap between the turnstiles panel and the other things.
- D、 It is forbidden to sit, hang or bump turnstiles;
- E、 If the power is off more than 2 hours, please pull out the socket of storage battery to protect the energy;
- F、 Any other problems, please contact with suppliers.



Dimension of Tripod Bottom



Tri-pod Surface Installation



#### USA OFFICE:

1008 University Ave,  
Berkeley, CA-94710  
USA  
T: +1-510-776-0384  
[usa@vantagesecurity.com](mailto:usa@vantagesecurity.com)

#### UAE OFFICE:

602, Empire Heights Tower -B  
Business Bay, Dubai, UAE  
Ph: +971-42778265,+971-554059271  
E: [uae@vantagesecurity.com](mailto:uae@vantagesecurity.com)

#### HONG KONG OFFICE:

Unit M, 1st Floor,  
Mau Lam Community Building  
16-18 Mau Lam Station, Jordan  
Kowloon, Hong Kong  
T: +852-95058112  
[hk@vantagesecurity.com](mailto:hk@vantagesecurity.com)

#### INDIA OFFICE:

B-5, Sector 7,  
Noida, U.P. - 201301, India  
T: +91-120-4632200  
M: +91-9990019911  
M: +91-7042395632  
[india@vantagesecurity.com](mailto:india@vantagesecurity.com)

### **Vantage Integrated Security Solutions Ltd.**

B3, Bredon House 321, Tenttenhall Road Tettenhall, Wolverhampton West Midlands,  
WV6 0JZ United Kingdom

Ph: +44-1902-793383 Email ID: [sales@vantagesecurity.com](mailto:sales@vantagesecurity.com)

**If you are interested in partnering with Vantage. Email us today at [sales@vantagesecurity.com](mailto:sales@vantagesecurity.com)**